



e-Health

Risk Medical Solutions

Individual & less expensive screening for diabetic
retinopathy

www.risk.is

Individualized allocation of health care resources

“Our mission is to use individual risk and severity profiles to find optimal use of health-care resources”

Product

Risk Medical Solutions (RMS) has developed a risk calculator for diabetic retinopathy screening. It calculates individual risk levels for patients that are used to determine the **frequency** of diabetic retinopathy **screening**.



Diabetic patients with high risk for progression of diabetic retinopathy are screened more frequently & those with low risk are screened less frequently. Compared with the present gold standard of annual screening our system provides the same benefits with 50% fewer screening visits.

This means the cost of running diabetic screening programs can be cut in half.

(see: Aspelund et.al: Individual risk assessment and information technology to optimize screening frequency for diabetic retinopathy. Diabetologia, May, 2011)

Trial versions of our products are on www.risk.is

Cost savings by re-allocation of health-care resources

The purpose of this system is to reduce cost of diabetic screening and to re-allocate available resources towards those who need them. With individualized screening it is possible to screen “high-risk” patients more frequently than “medium- and low-risk” patients, thus optimizing treatment outcome with minimal cost. Unnecessary screening is omitted thereby improving service to patients. If the system were to be implemented in EU alone it would save 580 million EUR and 29 million working hours each year.

Company

RMS was founded in 2009 by professor Einar Stefánsson MD and Arna Guðmundsdóttir MD and is comprised of 12 people specialized in medicine, mathematics, statistics, programming, economics and business. The employees share a vision to re-structure the allocation of available health-care resources.

The company has received significant support from the academic society in Iceland and received grants from the Icelandic Technology Development Fund, the Icelandic Innovation Center, and commercial banks amongst others. First round of private investment was completed in 2011. Amongst shareholders are the University of

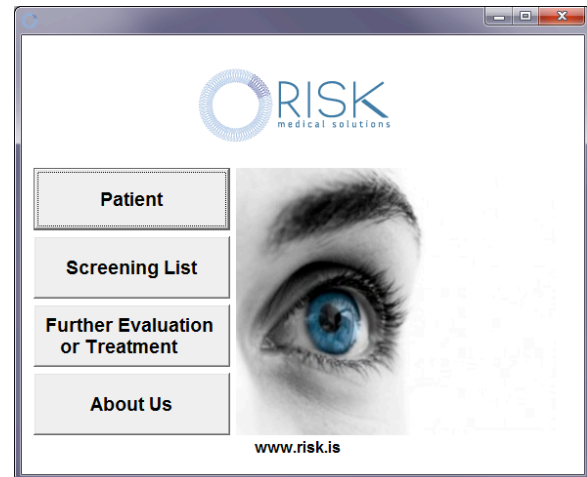
Iceland and the Icelandic University Hospital who both contribute significant resources towards the project.

What we deliver

The software can be delivered and operated either through a stand-alone management system,

or as an integrated part in a centralized/pre-existing EMR system.

The stand alone EMR system we have created functions as a patients management program, storing important data and allows for import/export and calculations of risk for sight threatening retinopathy. The EMR can be implemented into any computers and is compatible to most operating systems in use. The framework for this system is Danish and has been clinically used for over 20 years by medical doctors and other health-care professionals. A trial version of the system may be downloaded from www.risk.is



The group behind this product have over 20 years of experience in organizing and running retinopathy screening programs around the world and are at the forefront of diabetic retinopathy screening research globally. The company brings valuable expertise with its products and provides all necessary guidance on implementing the system and its features.

Validation

The EMR system is currently is being tested in Riyadh Saudi Arabia, New York, London, Hong Kong and China. Discussions are also in progress with UK Trade and Investment commissions in regards to implementing the product in the UK. RMS is now in the process of developing a smart phone application for Nokia, Android and iPhones with monitoring software for individual use.

Who benefits from our product?

Currently over 300 million people worldwide suffer from diabetes. The prevalence of diabetes is estimated to double by 2030. There are already limited resources available for this growing epidemic, yet the need is great. Large numbers of diabetic patients can benefit from individualized medical monitoring. Our system suits all health care organizations and companies that care for diabetes,